

Directions to the PGA Demo Day at OCN



2017 MERCHANDISE SHOW

From Orlando International Airport and Points East On Beeline Expressway:

- Take SR 528 (Beeline Expressway) West to Interstate 4
- Go West on I-4 to exit 68 (Lake Buena Vista/SR 535)
- Go North (right) on Apopka Vineland Road (SR 535) .25 miles North to CR 535
- Go West (Left) on CR 535 North, 6.4 miles to Reams Rd.
- Go South (left) on Reams Rd, 3.9 miles to Lake Hancock Rd.
- Go West (Left) 200 yards on Lake Hancock And Continue Straight onto Summerlake Blvd for 7 miles
- Go South (Left) on Phil Ritson Way 1.5 miles to Orange County National

From International Drive and Sea World Area:

- Take Sand Lake Road West 5 miles to Turkey Lake Road and turn left.
- Go 2 miles on Turkey Lake Rd to Palm Parkway and proceed straight 2.7 miles to intersection of SR 535/Apopka Vineland Rd.
- Proceed straight on CR 535 (Winter Garden/Vineland Road) 6.4 Miles to Reams Rd.
- Go left on Reams Rd, 3.9 miles to Lake Hancock and turn left.
- Go West (Left) 200 yards on Lake Hancock And Continue Straight onto Summerlake Blvd for 7 miles
- Go South (Left) on Phil Ritson Way 1.5 miles to Orange County National.

From West Palm Beach, Miami and Points Southeast on Florida's Turnpike:

- Take FL Turnpike North to exit 272 (SR 50, Winter Garden/Clermont).
- Go East (right) on SR 50, 1.5 miles to CR 545 (Avalon Rd).
- Go South (right) on CR 545, 9.5 miles to Phil Ritson Way on left.
- Go East (left) on Phil Ritson Way to Orange County National Golf Center Go East (left) on Phil Ritson Way to Orange County National Golf Center.

From Gainesville, Ocala (Interstate 75 South) and Points Northwest on Florida's Turnpike:

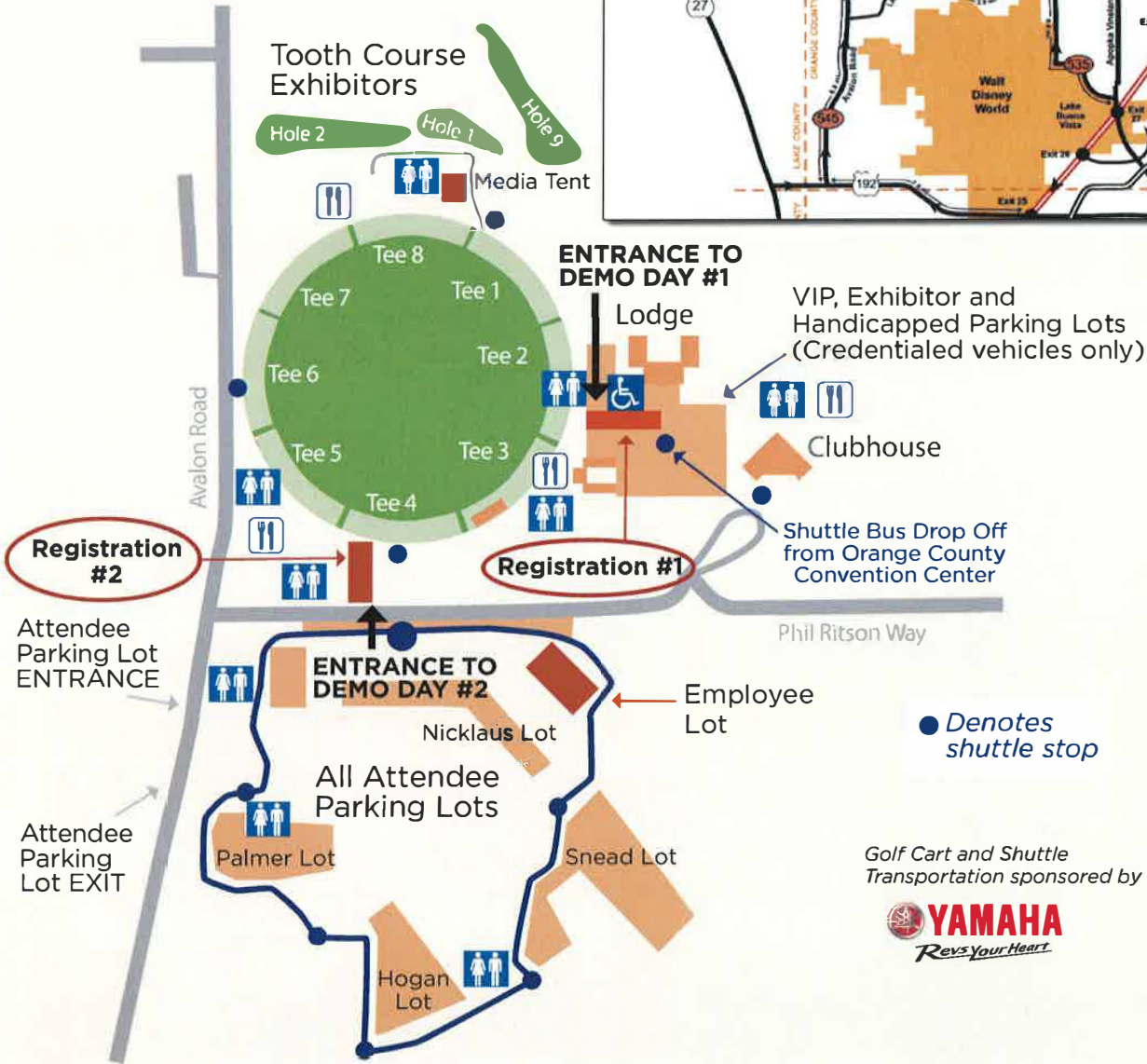
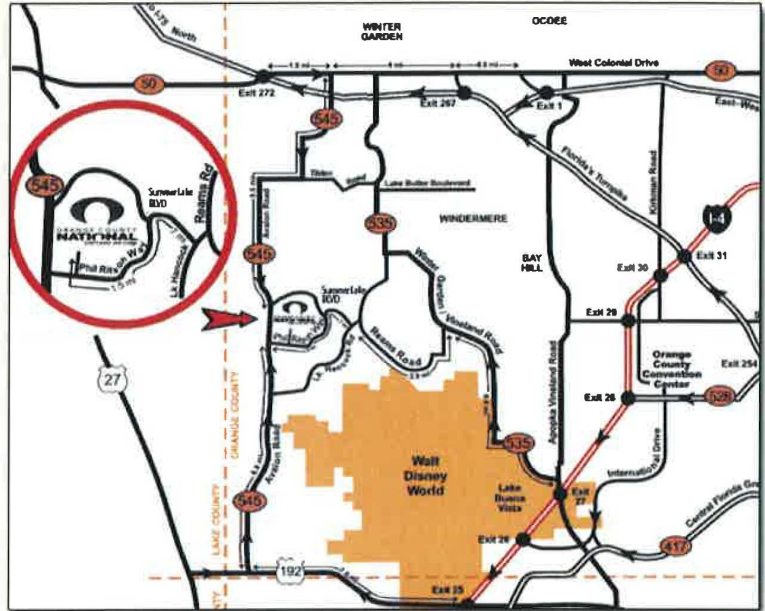
- Take FL Turnpike South to exit 272 (SR 50, Winter Garden/Clermont)
- Go East (left) on SR 50, 1.5 miles to CR 545 (Avalon Rd).
- Go South (right) on CR 545, 9.5 miles to Phil Ritson Way on left.
- Go East (left) on Phil Ritson Way to Orange County National Golf Center Go East (left) on Phil Ritson Way to Orange County National Golf Center.

From Universal Studios Area:

- From Kirkman and Vineland Road, Take Vineland Rd 1 mile to Turkey Lake Rd and turn left.
- Go 4.8 miles on Turkey Lake Rd to Palm Parkway and proceed straight 27 miles to intersection of SR 535/Apopka Vineland Rd.
- Proceed straight on CR 535 (Winter Garden/Vineland Road) 6.4 Miles to Reams Rd.
- Go left on Reams Rd, 3.9 miles to Lake Hancock and turn left.
- Take your first right on Porter Rd .7 miles to Phil Ritson Way and stay left.
- Go west on Phil Ritson Way 1.5 miles to Orange County National on your right.

From Downtown Orlando, Daytona Beach, and Points Northeast on Interstate 4:

- From I-4, take SR 408 (East-West Expressway) West to Florida's Turnpike.
- Go North on FL Turnpike, 1 mile to exit 267A (429 South).
- Take 429 South, 8.5 miles to exit #13 Schofield Rd.
- Go East (left) on Schofield Rd to CR 545/Avalon Rd.
- Go South (right) on CR 545/Avalon Rd, 1.4 miles to Orange County National on left.



Golf Cart and Shuttle Transportation sponsored by

